

Tour code: **BTa14**
 Guaranteed departures
 Small group safari maximum: **12 travellers**
 Travel through: **Botswana & South Africa**
 Safari length: **14 days**

BOTSWANA WILD PARKS 2016



DEPARTS:

JOHANNESBURG on Sunday at 06:30am

ENDS:

VICTORIA FALLS on Saturday at +/-08:00am

Highlights

- * Khama Rhino Sanctuary – game viewing
- * Okavango Delta – mokoro trail and bush walks
- * Moremi Game Reserve – 3 day 4WD game viewing
- * Chobe – 4WD game viewing & river cruise
- * Victoria Falls – adventure activities



SAFARI GRADE: ACCOMMODATED

Botswana is considered Southern Africa's

premier game viewing destination. But it is also known as a very expensive destination. However by using a range of affordable lodges Sunway offers a fully accommodated tour of Botswana at a value for money price.

The BTa14 Johannesburg start saves you the cost of flights to Maun, and includes an opportunity to see rhino.

The BTa13 Maun start clients join the BTa14 group in Maun on day 2 eliminating the drive Jo'burg to Maun.

Overnight a total of all 13 nights accommodation in lodges, chalets and tented camps. Of which; 10 nights on safari we stay at small and intimate lodges, with en suite facilities.

1 night in Khama is in self catering chalets where two bedrooms share a bathroom.

2 nights tented camp in the Okavango. Each mini meru tent has twin camp beds with linen and en suite chemical toilet. Shared bucket shower tent with hot water off the fire.

Meals 13 breakfasts, 11 lunches and 6 dinners are included. Of which 7 breakfasts, 3 lunches & 3 dinners are provided by the lodges. The remaining included meals are provided by the Sunway crew, prepared at the vehicle and eaten around the camp fire.

Transport for the majority of this safari you travel in a custom-built Sunway Safari trucks with 12 forward facing seats; or (on 10% of tours) Mercedes Sprinter minibuses with 12 forward facing seats and air conditioning. For the game drives in Moremi and Chobe and the transfer into the Okavango we use open sided 4WD vehicles with local guides.

Limited participation An essential part of your safari is some participation. From carrying your own bag to cleaning your window and packing the truck in the morning – it's all part of your adventure and when everyone puts in a little effort the trip will run smoothly. Where the tour leaders provide meals we ask that clients help (on rotation) with the washing up.

Scenic Travel

www.scenictravel.nl – kantoor@scenictravel.nl - +31-(0)6-31995266

Day 1 JOHANNESBURG to KHAMA RHINO SANCTUARY [chalets - LD]

(B=breakfast, L=lunch D=dinner)

Departing Johannesburg at 06:30am we head north into Botswana and the Khama Rhino Sanctuary. The Khama Rhino Sanctuary Trust is a community based wildlife project established in 1992 to assist in saving the vanishing rhino, restore an area formerly teeming with wildlife to its previous natural state and provide economic benefits to the local Botswana community through tourism and the sustainable use of natural resources. This reserve situated on the Kalahari sandveld, has several natural waterholes and provides prime habitat for white rhino, zebra and wildebeest.

Day 1: Breakfast is not included

Day 1: Lunch provided by tour leaders with the help of the group

Day 1: Dinner provided tour leaders with the help of the group

Includes: Entrance fees to Khama Rhino Sanctuary & afternoon game drive
Overnight: [Khama Rhino Sanctuary](#), 2 twin share bedrooms in each chalet with 1 bathroom shared between 2 rooms.
 WiFi not available
Distance/time: 630km, ± 7½ hours, excluding border formalities & stops for sightseeing & lunch



Day 2 MAUN [lodge BL-]

We drive through the Kalahari to Maun, the gateway to the Okavango Delta. Since Maun's founding in 1915 as the capital of the Batawana people, it has had a reputation as a hard-living 'Wild West' town helping the local cattle ranching and safari operations. The name Maun is derived from the San word 'maung', which translates 'the place of short reeds'.

Day 2: Breakfast provided tour leaders with the help of the group

Day 2: Lunch provided by tour leaders with the help of the group

Day 2: Dinner will be an own expense meal at a local restaurant

Includes: -
Overnight: [Crocodile Camp](#), twin share bedrooms with en suite facilities. Swimming pool, bar, restaurant, telephone.
 WiFi not available
Distance/time: 450kms. ± 6½ hours, excluding stops for sightseeing
Optional Activities Scenic flight over the Okavango Delta (+/-USD95-120) pp depending on number of people in each aircraft)



Day 3 - 4 OKAVANGO DELTA [tented camp x2 BLD]

We drive into the Okavango Delta to the launch station where we board our mokoro's and pole to our tented camp in the heart of the largest inland delta in the world. This amazing environment has large numbers of red lechwe, buffalo, elephant and birds, particularly kingfishers! One of the best experiences in the Okavango Delta is to be poled along reed-lined channels in a mokoro (dug-out canoe). Sit back and relax as the water gurgles gently under the mokoro while your skilled poler points out the fauna and flora.

Day 3: Breakfast provided by the lodge

Day 3: Lunch provided by tour leaders with the help of the group

Day 3: Dinner provided by tour leaders with the help of the group

Day 4: Breakfast provided by tour leaders with the help of the group

Day 4: Lunch provided by tour leaders with the help of the group

Day 4: Dinner provided by tour leaders with the help of the group

Includes:

Entrance fees to the Okavango Delta, morning & afternoon game walks with local guides

Overnight:

Wilderness tented camping - 2 nights tented camp in the Okavango. Each mini meru tent has



hot

twin camp beds with linen and an en suite chemical toilet. Shared bucket shower tent with

water off the fire. Tents have built-in insect nets. We need to take our own water and all equipment. Wild tented camping can be very enjoyable but please remember that we leave no trace of our stay and take all rubbish away with us. The wilderness tented camp supplies all linen blankets and pillows. Each tent is appointed with twin camp beds, comfortable mattresses, bedside table and light. The camp chairs have a backrest.

WiFi not available

Distance/time:

2 hour 4WD transfer into the Delta, each way



Day 5, 6, 7, 8 MOREMI [3x tented bushlodge BLD, 1x lodge BL-]

We take an open 4WD into Moremi Game Reserve for fantastic game viewing! Chief's Island is the largest landmass within Moremi and was the Batswana tribe's richest hunting ground, before being declared a game reserve by the tribe. We spend 4 days on game drives watching the abundant wildlife including elephant, hippo, buffalo, lion & other game, both in Moremi Game Reserve and in private concession reserves surrounding the park. We return to Maun midday on day 8 for an evening restaurant meal (own expense).

Day 5: Breakfast provided by tour leaders with the help of the group

Day 5: Lunch provided by tour leaders with the help of the group

Day 5: Dinner will be a set meal provided by the lodge

Day 6, 7: Breakfast will be provided by the lodge


Day 6, 7: Lunch provided by tour leaders with the help of the group

Day 6, 7: Dinner will be a set meal provided by the lodge

Day 8: Breakfast will be provided by the lodge

Day 8: Lunch provided by tour leaders with the help of the group

Day 8: Dinner will be an own expense meal at a local restaurant

- Includes:** Entrance fees to Moremi Game Reserve, morning & afternoon game drives in open 4WD vehicle
- Overnight:** 3 x nights [Hyena Pan Bushlodge](#) – exclusive private tented bush lodge, bordering Moremi Game Reserve. Twin share permanent tented lodge with en suite facilities. WiFi not available
-  1x night Maun [Crocodile Camp](#), twin share bedrooms with en suite facilities. Swimming pool, bar, restaurant, telephone. WiFi not available
- Distance/time:** 150kms ± 4 hours, excludes game drives & stops for wildlife viewing (Maun – Lodge)
- Optional Activities** Scenic flight over the Okavango Delta (+/-USD95-120) pp depending on number of people in each aircraft)




Day 9 **MAKGADIKGADI PANS** [tented lodge or chalets BL -]

We have time for an optional game flight over the Okavango before we head to Nata (own expense). The shimmering salt pans of Makgadikgadi appear as a glaring white, endless plain. When the rain comes a dramatic change takes place as thousands of wildebeest and zebra migrate to the sweet nutritious grasslands and clouds of flamingo feed in its algae rich waters. It is an area of low rainfall so this spectacle only lasts a short while.

Day 9: Breakfast provided by the lodge

Day 9: Lunch provided by tour leaders with the help of the group

Day 9: Dinner will be an own expense meal

- Includes:** Entrance fees into Makgadikgadi Pans
- Overnight:** [Nata Lodge](#) – twin share luxury tents with en suite facilities. Swimming pool, bar, restaurant, telephone. (or [Pelican Lodge](#), – Chalets with en suite facilities) WiFi not available
- 

Distance/time: 320km, ± 3½ hours, excluding stops for sightseeing



Day 10 – 11 **CHOBE NATIONAL PARK** [lodge BL -]

The Chobe River is a stunning feature of Botswana and will be the focus of our lodge stay. The Chobe River flows lazily along the northern boundary of the Chobe National Park attracting some of the largest herds of elephant in Africa. An Early morning 4WD game drive in the Chobe National Park and an afternoon game viewing "sundowner" cruise to see the mighty elephant herds return to the Chobe River to quench their thirst.

Day 10, 11: Breakfast provided by tour leaders with the help of the group

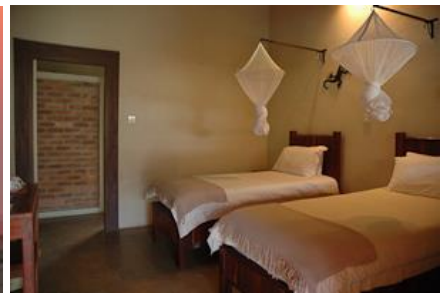
Day 10, 11: Lunch provided by tour leaders with the help of the group

Day 10, 11: Dinner will be an own expense meal

Scenic Travel

www.scenictravel – kantoor@scenictravel.nl - +31-(0)6-31995266

- Includes:** Entrance fees to Chobe National Park, morning game drive (day 11), sunset boat cruise (day 11)
- Overnight:** [Thebe River Safaris](#) – twin chalets with en suite facilities. Swimming pool, bar, restaurant, telephone.
WiFi available
- Distance/time:** 300kms, ± 4 hours, excluding stops for sightseeing + 1x 3 hour game drive
- Optional Activities** Afternoon game drive in open 4WD vehicle (on day 10)



Day 12 – 13 VICTORIA FALLS, ZIMBABWE [hotel Bx2 - -]

We visit "Mosi oa Tunya" or "the smoke that thunders" - Victoria Falls. These magnificent falls are one of the seven natural wonders of the world. The Victoria Falls Bridge was commissioned by Cecil John Rhodes in 1900, and was completed by 1905, although Rhodes never lived to see it. It spans the impressive gorge and the famous adrenalin pumping Victoria Falls bungi jump is done from this bridge, with a terrifying drop of 360ft (111m). Opportunities to white water raft on the mighty Zambezi River, bungi jump, or take a "flight of angels" (own expense).

Day 12: Breakfast provided by tour leaders with the help of the group

Day 12: Lunch will be an own expense meal

Day 12: Dinner will be an own expense meal

Day 13: Breakfast provided by the hotel

Day 13: Lunch will be an own expense meal

Day 13: Dinner will be an own expense meal

- Includes:** Entrance to see the Victoria Falls
- Overnight:** [Rainbow Hotel](#), twin rooms with en-suite facilities. Swimming pool, restaurant, bar and telephone.
Free WiFi available
- Distance/time:** 70kms – 1 hour, excluding border formalities
- Optional Activities** White water rafting, sunset cruises, scenic flights & many more



Day 14 VICTORIA FALLS, ZIMBABWE – TOUR ENDS [- B - -]

Tour ends after breakfast at 08:00am.

Day 14: Breakfast provided by the hotel

Day 14: NA

Day 14: NA

- Includes:** N/A
- Overnight:** N/A
- Distance/time:** N/A

Please note:

The distance and travel times quoted above are an estimate only, and subject to local road conditions

Please note:

That the accommodation specified above and in the itinerary, is a guide only and is subject to availability. Alternatives will be of a similar standard, and accommodation changes will be made without notice.



Special Interest:

Moremi is known for its big game including frequent leopard sightings. These elusive cats lead a predominantly solitary life and Moremi GR, with its varied habitats and high prey species densities, provides a perfect refuge for these beautiful creatures.

Sustainable Tourism:

In Maun we visit a community project, Sibanda's Craft shop, where craftswomen manufacture unique hand-painted cotton textiles such as tablecloths, & cushion covers. The aim at Sibanda's is to generate more employment within the community, empowering women to realise their dreams and improve the quality of their lives and those of their children, through economic

upliftment and self-fulfillment.

2016 PRICES AND DEPARTURE DATES:

Prices: (valid Jan 2016 – Dec 2016)

BTa14 € 2 390 pps + local payment of US\$ 300

Single supplement: € 840 pp (If you are traveling on your own, Sunway will "room" you with another same gender client. You do not pay extra when booking as a single person. If however you request a single room, then you'll pay the single supplement.)

2016 DEPARTURE DATES

BTa14 Botswana Wild Parks		
DEPARTS	ENDS	
JOHANNESBURG	VICTORIA FALLS, ZIMBABWE	
Sunday	Saturday	
06:30am	08:00am	
03-Jan-16	16-Jan-16	
10-Jan-16	23-Jan-16	
17-Jan-16	30-Jan-16	
24-Jan-16	06-Feb-16	
31-Jan-16	13-Feb-16	NBa
07-Feb-16	20-Feb-16	
14-Feb-16	27-Feb-16	
21-Feb-16	05-Mar-16	German
28-Feb-16	12-Mar-16	NBa
06-Mar-16	19-Mar-16	
13-Mar-16	26-Mar-16	NBa
20-Mar-16	02-Apr-16	
20-Mar-16	02-Apr-16	German
27-Mar-16	09-Apr-16	NBa / LM
03-Apr-16	16-Apr-16	
10-Apr-16	23-Apr-16	
24-Apr-16	07-May-16	German / NBa
01-May-16	14-May-16	
08-May-16	21-May-16	
15-May-16	28-May-16	
22-May-16	04-Jun-16	NBa
29-May-16	11-Jun-16	
05-Jun-16	18-Jun-16	NBa
12-Jun-16	25-Jun-16	NBa
19-Jun-16	02-Jul-16	NBa
26-Jun-16	09-Jul-16	German / NBa
03-Jul-16	16-Jul-16	NBa
10-Jul-16	23-Jul-16	NBa
17-Jul-16	30-Jul-16	NBa
24-Jul-16	06-Aug-16	German / NBa
31-Jul-16	13-Aug-16	NBa
07-Aug-16	20-Aug-16	NBa
14-Aug-16	27-Aug-16	NBa
21-Aug-16	03-Sep-16	German / NBa
28-Aug-16	10-Sep-16	NBa
04-Sep-16	17-Sep-16	NBa
11-Sep-16	24-Sep-16	German NBa
18-Sep-16	01-Oct-16	NBa
25-Sep-16	08-Oct-16	NBa
02-Oct-16	15-Oct-16	NBa

09-Oct-16	22-Oct-16	German / NBag
16-Oct-16	29-Oct-16	NBa
23-Oct-16	05-Nov-16	NBa
30-Oct-16	12-Nov-16	NBa
06-Nov-16	19-Nov-16	NBa
13-Nov-16	26-Nov-16	
20-Nov-16	03-Dec-16	German / NBag
27-Nov-16	10-Dec-16	
04-Dec-16	17-Dec-16	NBa
11-Dec-16	24-Dec-16	
18-Dec-16	31-Dec-16	
25-Dec-16	07-Jan-17	

* **Bold dates** are guaranteed departures; all other dates are guaranteed from 4 clients.

* **German:** These tours are lead by a German speaking translator / tour leader.

* **NBa:** These tours can be combined with a Livingstone – Livingstone Namibia Botswana Southern Circle 21day accommodated safari to create an awesome safari that visits the highlights of Botswana & Namibia.

BTa14 Johannesburg to Livingstone

€ 2 390 pps + local payment of US\$ 300

Single supplement: € 840 pp

BTa13 Maun to Livingstone *Fly into Maun on day 2 of the BTa14 (Monday)*

€ 2 290 pps + local payment of US\$ 300

Single supplement: € 810 pp

DETAILED TOUR INFORMATION:

In a nutshell

- A participation tour that offers an accommodated safari in Botswana at a reasonable price, accommodated in chalets, and cabins with a couple of nights tented camp to get us close to the wildlife.
- Some of the best wildlife viewing in Africa from open 4WDs and on game walks
- All inclusive trip with cultural experience, adventure and wildlife.
- Victoria Falls, Moremi Game Reserve, Chobe National Park, Okavango Delta, Kalahari desert and Makgadikgadi Pans.