

Tour code:

Guaranteed departures

Small group safari maximum:

Travel through:

Safari length:

CVa21

12 travellers

South Africa, Namibia, Botswana & Zimbabwe

21 days

2016

CAPE TO VIC FALLS "GRAND EXPLORER"



DEPARTS:

CAPE TOWN on Wednesday at 08:00am

ENDS:

VICTORIA FALLS, ZIMBABWE on Tuesday at 08:00am

Highlights

- * Cape Town – Cape Point day tour
- * Fish River Canyon – walking
- * Namib Desert – Sossusvlei dunes
- * Swakopmund – dune boarding & quad biking
- * Etosha National Park – game drives
- * Okavango Delta – mokoro excursion
- * Chobe National Park – river cruise
- * Victoria Falls – white water rafting



SAFARI GRADE: ACCOMMODATED

A variety filled journey covering the must see highlights of both Cape Town to Victoria Falls is one of the classic "overland" routes for Southern Africa. The safari is a variety filled journey including the Namib Desert, Etosha NP and the Okavango. Sunway makes this trip an affordable accommodated adventure. The uni-visa between Zimbabwe and Zambia makes travel between both sides of the falls easy.

The CVa21 Cape Town to Victoria Falls is the full 21 day safari.

The CWa13 Cape Town to Windhoek offers a complete Namibia safari with a Cape Town start.

Overnight 17 nights on safari we stay at small lodges (including tented lodges), with en suite facilities, and 2 nights tented camp in the Okavango. Each mini meru tent has twin camp beds with linen and en suite chemical toilet. Shared bucket shower tent with hot water off the fire. 1 night chalets where two bedrooms share a bathroom.

Meals 20 breakfasts, 16 lunches and 11 dinners are included. Of which 7 breakfasts are provided by the lodges. The remaining included meals are provided by the Sunway crew, prepared at the vehicle & eaten around the campfire or at the boma.

Transport for the majority of this safari you travel in custom-built Sunway Safari trucks with 12 forward facing seats. On 5% of tours we may use Mercedes Sprinter minibuses with 12 seats and air conditioning.

Limited participation An essential part of your safari is some participation. From carrying your own bag to packing the truck in the morning – it's all part of your adventure. There are some

Scenic Travel

www.scenictravel – kantoor@scenictravel.nl - +31-(0)6-31995266

long days with early starts so we need all to get involved to make the trip run efficiently. Where the tour leaders provide meals we ask that clients help (on rotation) with the washing up (the local polers will assist in the delta to make things easier).

ACCOMMODATED ITINERARY

Day 1 CAPE TOWN [guest house - - -]

Cape Town is one of the most picturesque cities in the world, with the majestic Table Mountain providing its central focus. After a tour briefing at 8:00am, we visit the African Penguin colony en route to Cape Point Nature Reserve, and spend the rest of the day relaxing on Hout Bay beach. We sample some of Cape Town's culinary wonders at a local restaurant at the Victoria & Alfred Waterfront (own expense).

Day 1: Breakfast is not included

Day 1: Lunch is an own expense meal

Day 1: Dinner is an own expense meal

Includes:

Entrance fees to Penguin colony & Cape Nature Point

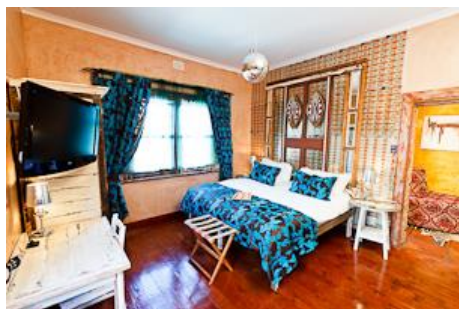
Overnight:

[Sweetest Guesthouses](#) – is a collection of individually decorated houses in a metropolitan area of Cape Town near the V&A Waterfront. The Sunway group may be spread amongst any of the houses, within walking distance of each other, and the group breakfasts will be taken in the same house. Rooms are twin with en-suite facilities (or similar guest house).

WiFi available

Distance/time:

Full day Cape Peninsular tour is 160km which takes between 6 and 8 hours.



Day 2 CEDERBERG [chalet BLD]

(B=breakfast, L=Lunch D=Dinner)

The Cederberg is a massive rock wilderness with giant sandstone boulders that have been sculpted by wind and rain into bizarre and artistic shapes. We head north to the Cederberg and explore the rugged landscape on foot before relaxing in chalets for the evening.

Day 2: Breakfast provided by the guest house

Day 2: Lunch provided by tour leaders with the help of the group

Day 2: Dinner provided by tour leaders with the help of the group

Includes:

Entrance fees, and walk in the Cedarberg

Overnight:

Western Cape Nature Conservation – 2 twin share bedrooms in each chalet with 1 bathroom shared between 2 rooms.

WiFi not available

Distance/time:

250kms, ± 3½ hours, excluding stops for sightseeing



Day 3 **GARIEP RIVER** [lodge BLD]

We make our way into the more arid regions and upon entering Namibia, we stay at a lodge on the Gariep River. Namibia's southern border river flows quietly and peacefully and the river valley is hardly affected by tourism. The riverbed is sandy, the water clean and clear. Time free for swimming and relaxing or you can venture down the river in canoes (own expense).

Day 3: Breakfast provided by tour leaders with the help of the group

Day 3: Lunch provided by tour leaders with the help of the group

Day 3: Dinner provided by tour leaders with the help of the group

Includes: N/A

Overnight: [Gariep River](#), twin share cabanas with en suite facilities. Bar, restaurant, telephone. Internet cafe available

Distance/time: 500kms, ± 7 hours, excluding stops for sightseeing & lunch

Optional Activities Half day canoe safari



Day 4 **FISH RIVER CANYON** [lodge BLD]

The Fish River Canyon, situated along the lower reaches of the Fish River, is one of the most impressive natural beauties in the southern part of Namibia. With its depth of up to 550 metres, the Fish River Canyon is the second largest canyon in the world. We make our way to the canyon and in the afternoon watch a spectacular sunset as the sun slips over the canyon's rim.

Day 4: Breakfast provided by tour leaders with the help of the group

Day 4: Lunch provided by tour leaders with the help of the group

Day 4: Dinner provided by tour leaders with the help of the group

Includes: Entrance fees to look out point at Fish River Canyon

Overnight: [Canon Mountain Camp](#) – twin share chalet with en suite facilities. WiFi not available

Distance/time: 300kms, ± 4 hours excluding stops for sightseeing & lunch





Day 5 - 6 **NAMIB DESERT** [tented lodge BLD]

The parched Namib Desert has endless orange dunes blown into sharp ridges by the sand-shifting wind and at Sossusvlei they form a gateway into the Namib Desert. We will walk to Sossusvlei, explore Sesriem Canyon and from the comfort of our lodge outside the national park watch dramatic sunsets over the world's highest sand dunes. (If you prefer not to do the 4km walk to Sossusvlei there is an optional own expense 4WD transfer)

Day 5, 6: Breakfast provided by tour leaders with the help of the group

Day 5, 6: Lunch provided by tour leaders with the help of the group

Day 5, 6: Dinner provided by tour leaders with the help of the group

Includes: Entrance fees to Sesriem Canyon and Naukluft National Park

Overnight: [Desert Camp](#) – twin share permanent tents with en suite facilities. Restaurant, swimming pool & bar. WiFi not available

Distance/time: 550kms, ± 7½ hours excluding stops for sightseeing & lunch

Optional Activities: On arrival at Sossusvlei the guide will walk with the group into Sossusvlei (+/- 3.5km). For those clients who do not want to walk, there are 4WD vehicles that can drive you in. The 4WD, is an own expense (+/- N\$50 each way) and is optional.



Day 7 – 8 **SWAKOPMUND** [guest house Bx2 Lx1-]

Swakopmund is a popular seaside resort with a slightly nostalgic atmosphere, characterized by numerous colonial buildings. In terms of flora, both the Welwitschia Mirabilis and the Kokerboom grow on the stony plains of the Namib and many beautiful specimens surround this coastal town. Swakopmund is also the adventure activity capital of Namibia. Day free to explore the town or try dune boarding or sea kayaking (own expense).

Day 7: Breakfast provided by tour leaders with the help of the group

Day 7: Lunch provided by tour leaders with the help of the group

Day 7: Dinner will be an own expense meal at a local restaurant

Day 8: Breakfast provided by the guest house

Day 8: Lunch will be an own expense meal

Day 8: Dinner will be an own expense meal at a local restaurant

Includes: N/A

Overnight: [Hotel d'Avignon](#) - twin share rooms with en suite facilities. Telephone & restaurant. WiFi in main building

Distance/time: 350kms, ± 5 hours excluding stops for sightseeing

Optional Activities: Sand boarding, Skydiving, Ocean canoe safari, Scenic flights & many more



Day 9 DAMARALAND [chalet BLD]

Namibia is a land of great contrasts and Damaraland demonstrates this with stark plains, petrified forests and ancient valleys leading to rocky outcrops and the soaring peaks of the Brandberg Massif Mountains.

Day 9: Breakfast provided by the guest house

Day 9: Lunch provided by tour leaders with the help of the group

Day 9: Dinner provided by tour leaders with the help of the group

Includes:

Entrance fees to Cape Cross Seal colony, San Rock Art

Overnight:

[Brandberg White Lady Lodge](#) – twin share chalets with en-suite facilities, bar, restaurant & swimming pool.

WiFi not available

Distance/time:

350kms ± 6 hours excluding stops for sightseeing & lunch



Day 10 – 11 ETOSHA NP [guest lodge BLD]

Once a vast lake fed by the Kunene River, the pan that is Etosha NP dried up thousands of years ago when the river waters chose a new course. Etosha is big game country. We take game drives around the huge pan to find the elephants, herds of antelope and lions around the waterholes. We stay at a lodge on the outskirts of the national park.

Day 10, 11: Breakfast provided by tour leaders with the help of the group

Day 10, 11: Lunch provided by tour leaders with the help of the group

Day 10, 11: Dinner provided by tour leaders with the help of the group

Includes:

Entrance fees to Etosha National Park, full day game drive in Etosha NP

Overnight:

[Tarentaal Guest Farm](#) – private working farm outside Etosha National Park. Twin rooms with en-suite facilities. Swimming pool, bar & telephone. (35km/25min from Anderson Gate to Etosha)

WiFi not available

Distance/time:

400kms, ± 5½ hours excluding stops for sightseeing + full day game drive in Etosha NP



Day 12 WINDHOEK [guest house BL-]

This pretty town, beautifully situated in a valley, combines the architecture of a modern city with numerous buildings in the style of the German colonial era. The charm of the city of Windhoek lies in its harmonious blend of African and European cultures and the friendliness of its people. We visit the cosmopolitan capital and enjoy a restaurant meal (own expense).

Day 12: Breakfast provided by tour leaders with the help of the group

Day 12: Lunch provided by tour leaders with the help of the group

Day 12: Dinner will be an own expense meal at a local restaurant

Includes: N/A

Overnight: [Klein Windhoek Guest House](#) – twin rooms with en-suite facilities, swimming pool, restaurant & bar.

WiFi available

Distance/time: 500kms, ± 7 hours excluding stops for sightseeing & lunch



Cape to Namibia tour CWa13 ends at +/-08:00am on morning of day 13. See www.sunway-safaris.com

Day 13 KALAHARI [chalet BLD]

Crossing into Botswana we overnight in rustic, grass huts in the heart of the Kalahari. We take a walk with the local Bushmen to learn fascinating bush skills.

Day 13: Breakfast provided by the guest house

Day 13: Lunch provided by tour leaders with the help of the group

Day 13: Dinner provided by tour leaders with the help of the group

Includes: Nature walk with local San bushman

Overnight: [Dgae Qare San Lodge](#) – en-suite rooms.

WiFi not available

Distance/time: 550kms, ± 7½ hours excluding border formalities & stops for sightseeing & lunch



Day 14, 15, 16 OKAVANGO DELTA [lodge x1 BL-] [tented camping x2 BLD]

The Okavango Delta is the only inland delta in the world. Instead of flowing into the sea, the annual flood of fresh water, spreads over 15000sq km of the Kalahari sand in a maze of lagoons and channels. We journey deep into the Okavango Delta on mekoro (dugouts). We have 2 nights at our tented camp and enjoy game walks, swimming, the birdlife and game in this pristine wilderness area.

Scenic Travel

www.scenictravel – kantoor@scenictravel.nl - +31-(0)6-31995266

SCENIC TRAVEL

Day 14: Breakfast provided by tour leaders with the help of the group

Day 14: Lunch provided by tour leaders with the help of the group

Day 14: Dinner will be an own expense meal at a local restaurant

Day 15: Breakfast provided by the guest house

Day 15: Lunch provided by tour leaders with the help of the group

Day 15: Dinner provided by tour leaders with the help of the group

Day 16: Breakfast provided by tour leaders with the help of the group


Day 16: Lunch provided by tour leaders with the help of the group

Day 16: Dinner provided by tour leaders with the help of the group

Includes:

Entrance to Okavango Delta, morning and afternoon game walks with local guides

Overnight:

1 night Maun, [Island Safari Lodge](#) – standard twin rooms with en suite facilities. 

Swimming pool, bar, restaurant, telephone.

WiFi not available

2 x nights Okavango Delta – wilderness tented camping - 2 nights tented camp in the Okavango. Each mini meru tent has twin camp beds with linen and an en suite chemical toilet. Shared bucket shower tent with hot water off the fire. Tents have built-in insect nets. We need to take our own water and all equipment. Wild tented camping can be very enjoyable but please remember that we leave no trace of our stay and take all rubbish away with us. The wilderness tented camp supplies all linen blankets and pillows. Each tent is appointed with twin camp beds, comfortable mattresses, bedside table and light. The camp chairs have a backrest.

WiFi not available

Distance/time:

300km, ± 4½ hours (Kalahari – Maun) Okavango transfer ± 3 hours each way

Optional Activities:

Scenic flight over the Okavango Delta (+/-USD95-120) pp depending on number of people in each aircraft)



Day 17

MAKGADIKGADI PANS [tented lodge or chalet BL-]

The shimmering salt pans of Makgadikgadi are the size of Switzerland and most of the time appear as a glaring, white, endless plain. When the rain comes a dramatic change takes place as the pans come to life with frantically feeding water birds and great herds of zebra, wildebeest and springbok.

Day 17: Breakfast provided by tour leaders with the help of the group

Day 17: Lunch provided by tour leaders with the help of the group

Day 17: Dinner will be an own expense meal

Includes:

Entrance fees to Makgadikgadi Pans

Overnight:

[Nata Lodge](#) – twin share luxury tents with en suite facilities, swimming pool, restaurant & bar. Swimming pool, bar, restaurant, telephone. (or Pelican Lodge, – twin share rooms with en suite facilities. Swimming pool, bar, restaurant, telephone)

WiFi not available / internet café available

Distance/time:

320km, ± 4 hours, excluding stops for sightseeing + 2 hour 4WD transfer out of delta

Scenic Travel

www.scenictravel – kantoor@scenictravel.nl - +31-(0)6-31995266



Day 18 **CHOBE NATIONAL PARK** [chalet BL-]

Chobe National Park is famous for large herds of elephant and buffalo. Our afternoon is spent on an exciting wildlife boat cruise in the Chobe NP.

Day 18: Breakfast provided by tour leaders with the help of the group

Day 18: Lunch provided by tour leaders with the help of the group

Day 18: Dinner will be an own expense meal

Includes:

Sunset game viewing boat cruise on the Chobe River

Overnight:

[Thebe River Safaris](#) – twin chalets with en-suite facilities. Swimming pool, bar, restaurant, telephone.
WiFi available



Distance/time:

300kms, ± 3½ hours excluding stops for sightseeing & lunch



Day 19, 20, 21 **ZIMBABWE/ VICTORIA FALLS** [hotel Bx3 - -]

Magnificent Victoria Falls is one of the seven natural wonders of the world. David Livingstone 'discovered' the falls in 1885 and named them after his Queen. The scene he encountered was a mile-wide (1.6 km) sheer basalt fault line over which the mighty Zambezi tumbled to a depth of 100m, creating a cloud of spray. The falls are also the centre of a wide range of activities, including white water rafting on the mighty Zambezi, scenic flights or a 111m bungi jump (own expense). Tour ends at 08:00am at the hotel.

Day 19: Breakfast provided by tour leaders with the help of the group

Day 19: Lunch will be an own expense meal

Day 19: Dinner will be an own expense meal

Day 20: Breakfast will be provided by the lodge

Day 20: Lunch will be an own expense meal

Day 20: Dinner will be an own expense meal

Day 20: Breakfast will be provided by the lodge

Day 20: N/A

Day 20: N/A

Includes:

Entrance fees to Vic Falls

Overnight:

[Rainbow Hotel](#), twin rooms with en-suite facilities. Swimming pool, restaurant, bar and telephone.



WiFi available

Distance/time:

70kms – 1 hour, excluding border formalities

Optional Activities

White water rafting, sunset cruises, scenic flights & many more

Scenic Travel

www.scenictravel – kantoor@scenictravel.nl - +31-(0)6-31995266



Please note: The distance and travel times quoted above are an estimate only, and subject to local road conditions and photo stops!

Please note: That the accommodation specified above and in the itinerary, is a guide only and is subject to availability. Alternatives will be of a similar standard, and accommodation changes will be made without notice.

Special Interest: See magnificently dressed Herero women whose traditional dress is reminiscent of the early German colonisation of German South-West Africa. Herero Dolls made in this fashion can be bought as curios and make wonderful gifts.

Sustainable Tourism:

During our stay in Damaraland a local guide takes us to visit a San Bushman Rock Art site. Our entrance fees go towards ensuring that the area remains protected for future generations, and that the local community benefits directly from tourism.

2016 PRICES AND DEPARTURE DATES:

Prices: (Valid: Jan 2016 – Dec 2016)

€ 3 170pps

Single supplement: € 720pp (If you are travelling on your own, Sunway will "room" you with another same gender client. You do not pay extra when booking as a single person. If however you request a single, then you'll pay the single supplement and have a single room.)

2016 DEPARTURE DATES

CWa13 Cape to Windhoek				CVa21 Cape to Victoria Falls Grand Explorer			
DEPARTS		ENDS		DEPARTS		ENDS	
CAPE TOWN		WINDHOEK		CAPE TOWN		VICTORIA FALLS,	
ZIMBABWE							
Wednesday at 08:00am		Monday at 08:00am		Wednesday at 08:00am		Tuesday at 08:00am	
SAa	27-Jan-16	08-Feb-16		SAa	27-Jan-16	16-Feb-16	
SAag	03-Feb-16	15-Feb-16	German	SAag	03-Feb-16	23-Feb-16	German
SAa	10-Feb-16	22-Feb-16		SAa	10-Feb-16	01-Mar-16	
SAa	24-Feb-16	07-Mar-16		SAa	24-Feb-16	15-Mar-16	
SAa	16-Mar-16	28-Mar-16		SAa	16-Mar-16	05-Apr-16	
SAa	30-Mar-16	11-Apr-16		SAa	30-Mar-16	19-Apr-16	
SAa	06-Apr-16	18-Apr-16		SAa	06-Apr-16	26-Apr-16	
SAag	20-Apr-16	02-May-16	German	SAag	20-Apr-16	10-May-16	German
SAa	27-Apr-16	09-May-16		SAa	27-Apr-16	17-May-16	
SAa	18-May-16	30-May-16		SAa	18-May-16	07-Jun-16	
SAa	01-Jun-16	13-Jun-16		SAa	01-Jun-16	21-Jun-16	
SAag	08-Jun-16	20-Jun-16	German	SAag	08-Jun-16	28-Jun-16	German
SAa	15-Jun-16	27-Jun-16		SAa	15-Jun-16	05-Jul-16	
SAa	06-Jul-16	18-Jul-16		SAa	06-Jul-16	26-Jul-16	
SAa	20-Jul-16	01-Aug-16		SAa	20-Jul-16	09-Aug-16	
SAag	27-Jul-16	08-Aug-16	German	SAag	27-Jul-16	16-Aug-16	German
SAa	03-Aug-16	15-Aug-16		SAa	03-Aug-16	23-Aug-16	
SAag	10-Aug-16	22-Aug-16	German	SAag	10-Aug-16	30-Aug-16	German
SAa	24-Aug-16	05-Sep-16		SAa	24-Aug-16	13-Sep-16	
SAa	07-Sep-16	19-Sep-16		SAa	07-Sep-16	27-Sep-16	
SAag	14-Sep-16	26-Sep-16	German	SAag	14-Sep-16	04-Oct-16	German
SAa	21-Sep-16	03-Oct-16		SAa	21-Sep-16	11-Oct-16	
SAa	12-Oct-16	24-Oct-16		SAa	12-Oct-16	01-Nov-16	
SAa	26-Oct-16	07-Nov-16		SAa	26-Oct-16	15-Nov-16	
SAag	02-Nov-16	14-Nov-16	German	SAag	02-Nov-16	22-Nov-16	German
SAa	09-Nov-16	21-Nov-16		SAa	09-Nov-16	29-Nov-16	
SAa	30-Nov-16	12-Dec-16		SAa	30-Nov-16	20-Dec-16	
SAa	14-Dec-16	26-Dec-16		SAa	14-Dec-16	03-Jan-17	
SAag	21-Dec-16	02-Jan-17	German	SAag	21-Dec-16	10-Jan-17	German
SAa	28-Dec-16	09-Jan-17		SAa	28-Dec-16	17-Jan-17	

* **Bold dates** are guaranteed departures, all other dates guaranteed from 4 clients.

* **SAa:** The "Cape Town to Victoria Falls Grand Explorer" can be combined after all "South Africa Rainbow Route" departures to create a complete circular safari in Southern Africa.

* **German / g:** These tours have a German speaking translator / tour leader

CVa21 Cape Town to Victoria Falls, Zimbabwe

€ 3 170 pps

Single supplement: € 720 pp

CWa13 Cape Town to Windhoek

€ 2 190 pps

Single supplement: € 440 pp

DETAILED TOUR INFORMATION:

In a nutshell

- A true exploration of Southern Africa - see it all – and have the comfort of a bed each night!
- A participation tour that offers an accommodated safari at a reasonable price, accommodated in chalets, and cabins with a couple of nights in a tented camp in the Okavango to get us close to the wildlife.
- All inclusive trip with cultural experience, adventure and wildlife.
- Gariep River, Fish River Canyon, Namib desert, Sossusvlei, Swakopmund, Skeleton coast, Spitzkoppe, Twyfelfontein engravings, Etosha, Okavango Delta, Victoria Falls.