

Tour code: **LM22**
 Guaranteed departures
 Small group safari maximum: **12 travellers**
 Travel through: **Zambia, Malawi, Mozambique & South Africa**
 Safari length: **22 days**

2016

MALAWI, ZAMBIA & MOZAMBIQUE "TRADE ROUTE"



DEPARTS:

LIVINGSTONE on Saturday at 14:00pm

ENDS:

JOHANNESBURG on Saturday at 16:00pm

Highlights

- * Victoria Falls – natural wonder of the world
- * Lower Zambezi – canoeing
- * South Luangwa NP – game walk & 4WD game drives
- * Lake Malawi – snorkelling & beaches
- * Benguerra Island – explore islands on a dhow
- * Inhambane – beaches and scuba diving
- * Kruger National Park – game drives



SAFARI GRADE: CAMPING

The Trade Route is an extraordinary journey across South Eastern Africa. Active days canoeing on the Zambezi River and snorkeling in the warm Indian Ocean, game viewing in the world famous Kruger and bush walks in South Luangwa. We recommend Malaria prophylactics. Border crossings can be slow, so you need to be prepared for the experience. This journey has challenges and is for the adventurous traveller but also has magnificent highlights.

LM22 Zambia, Malawi, Mozambique is the full 22 day tour.

The LL12 Zambia & Malawi covers highlights of Zambia, with Lake Malawi, in just 12 days. Ends Lilongwe.

Overnight 16 nights on safari designated campsites, in national parks and towns. Campsites have hot showers. Please note there is 1 night of very basic camping with poor facilities in Tete (there is no alternative). 2 nights guest house twin bed accommodation in Vilankulos with ablutions shared between several rooms. 2 nights casitas in Inhambane, twin bedrooms with en suite facilities. 1 night in Graskop in lodge with en suite twin bedrooms, allowing you time to tidy up & pack before flying from Jo'burg on day 22.

Meals 21 breakfasts, 19 lunches and 16 dinners will be provided by the Sunway crew, prepared at the vehicle and eaten around the camp fire or in the boma.

Transport Due to sometimes poor roads we only use Sunway Safari trucks for this tour. Potholes, damaged gravel roads and livestock on the roads can make travel slow, you'll pass through villages and witness the local lifestyle all the way. For the game drives in South Luangwa we use open 4WD.

Limited participation An essential part of your safari is participation. From putting up your tent to packing the truck in the morning – it's all part of your adventure. Your tour leaders will do all the meal preparation but we do ask the clients to help (on rotation) with the washing up. There are some long travel days which means early morning starts so we all need to get involved to make the day run efficiently.

CAMPING ITINERARY

Day 1 - 2

LIVINGSTONE [camping Bx1 - -]
(B= breakfast, L= lunch, D= dinner)

The group will meet in Livingstone, in Zambia, at 14:00 where we have 2 days to explore Victoria Falls, a natural wonder of the world, plunging into the Zambezi Gorge. Adventure activities abound, white water rafting on the mighty Zambezi, or a 111m bungi jump (own expense).

Day 1: Breakfast is not included

Day 1: Lunch will be an own expense meal

Day 1: Dinner will be an own expense meal at a local restaurant

Day 2: Breakfast provide by the tour leaders with the help of the group

Day 2: Lunch will be an own expense meal

Day 2: Dinner will be an own expense meal at a local restaurant

Includes:

Entrance to see the Victoria Falls

Overnight:

Campsite – good ablution facilities, hot showers, swimming pool, restaurant & bar

Distance/time:

N/A

Optional Activities:

White water rafting, sunset cruises, scenic flights & many more



Day 3

KAFUE RIVER [camping BLD]

A long drive takes us across the rolling Miombo forested hills of southern Zambia to the Kafue River where we camp the night.

Day 3: Breakfast provided by the tour leaders with the help of the group

Day 3: Lunch provided by the tour leaders with the help of the group

Day 3: Dinner provided by the tour leaders with the help of the group

Includes:

-

Overnight:

Campsite – good ablution facilities, hot showers, swimming pool & bar

Distance/time:

505 kms, ± 8 hours, excludes stops for sightseeing & lunch



Day 4 - 5 LOWER ZAMBEZI CANOEING [camping BLD]

We paddle down the mighty Zambezi River, home of the tribal mythical god – Nyami Nyami. Canoeing past local riverside villages and magnificent scenery. We camp wild on an island in the heart of untamed Africa. The following morning we continue our canoe safari through an area teeming with elephants, hippos and other wildlife. We will be collected by a motorboat, and are transferred back up river to our starting campsite.

Day 4, 5: Breakfast provided by the tour leaders with the help of the group

Day 4, 5: Lunch provided by the tour leaders with the help of the group

Day 4, 5: Dinner provided by the tour leaders with the help of the group

Includes: Full day canoe safari on Lower Zambezi with local river guides
Overnight: Camping – on day 4, we camp wild on an island in the Zambezi River, on day 5, we stay in a designated campsite, with good ablution facilities, with hot showers, swimming pool & bar.
Distance/time: 50kms, ± 1½ hours (subject to road conditions), excludes stops for sightseeing & lunch



Day 6 LUSAKA [camping BLD]

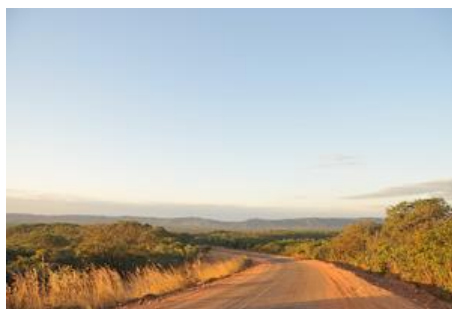
We head to Lusaka where we stock up on supplies in the bustling shops and markets of the Zambian capital. Taking the Great East Road we drive this afternoon until sunset.

Day 6: Breakfast provided by the tour leaders with the help of the group

Day 6: Lunch provided by the tour leaders with the help of the group

Day 6: Dinner provided by the tour leaders with the help of the group

Includes: N/A
Overnight: Campsite – good ablution facilities, hot showers, swimming pool & bar
Distance/time: 380kms, ± 6½ hours (subject to road conditions), excludes stops for sightseeing & lunch



Day 7, 8, 9 SOUTH LUANGWA NATIONAL PARK [camping BLD]

Make our way down into "the valley" of the South Luangwa National Park. This remote region is one of Africa's finest wildlife sanctuaries where hippo, elephants, lion and leopard abound. We camp on the banks of the Luangwa River and explore the area on 2 game walks and 2 open 4WD game drives, one at night with spotlights, to see nocturnal animals. (In the green season, Dec – Apr, walks may not be possible in which case we'll do extra game drives).

Day 7, 8, 9: Breakfast provided by the tour leaders with the help of the group

Day 7, 8, 9: Lunch provided by the tour leaders with the help of the group

Day 7, 8, 9: Dinner provided by the tour leaders with the help of the group

Includes: Entrance fees to South Luangwa National Park, 2x game walks, 2 game drives
Overnight: Campsite – good ablution facilities, hot showers, swimming pool, restaurant & bar
Distance/time: 500kms, ± 8 hours (subject to road conditions), excludes stops for sightseeing & lunch
Optional Activities: Game walks & game drives



Day 10 - 11 LAKE MALAWI [camping BLD]

Malawi "the warm heart of Africa". We re-stock with fresh supplies in the markets of Lilongwe before heading to our camp on the beach at Lake Malawi. We'll take a boat out to the islands to explore the fantastic bays and coves in the area.

Day 10, 11: Breakfast provided by the tour leaders with the help of the group

Day 10, 11: Lunch provided by the tour leaders with the help of the group

Day 10, 11: Dinner provided by the tour leaders with the help of the group

Includes: Island boat excursion
Overnight: Campsite – good ablution facilities, & hot showers
Distance/time: 510kms, ± 7 hours (subject to road conditions), excluding border formalities & stops for sightseeing



Livingstone to Lilongwe "Zambia Malawi" tour ends at 14:00pm on day 12 at Lilongwe airport. See www.sunway-safaris.com for itinerary & price (LL12).

Day 12 - 13 TRANSIT MOZAMBIQUE [camping BLD]

Heading south again we enter Mozambique at Zobue border post. Making our way back over the Zambezi we travel through the Tete region, camping en route in this remote part of Mozambique. (Campsite facilities are very basic.)

Day 12, 13: Breakfast provided by the tour leaders with the help of the group

Day 12, 13: Lunch provided by the tour leaders with the help of the group

Day 12, 13: Dinner provided by the tour leaders with the help of the group

Includes: N/A
Overnight: Campsite – very basic ablution facilities, & hot showers (sometimes!),
Distance/time: 800kms ± 6-7 hours per day (subject to road conditions), excludes stops for sightseeing & lunch



Day 14 - 15 **BAZARUTO ISLANDS** [chalets Bx2 Lx2 Dx1]

Upon reaching the Indian Ocean we stay overnight in Vilankulos. We take a full day to explore the Magaruque Island on a local dhow, a traditional ocean going trade vessel. Beautiful blue sea, snorkeling, expansive white beaches and some excellent seafood available – what a day!

Day 14: Breakfast provided by the tour leaders with the help of the group

Day 14: Lunch provided by the tour leaders with the help of the group

Day 14: Dinner provided by the tour leaders with the help of the group

Day 15: Breakfast provide by the tour leaders with the help of the group

Day 15: Lunch provided by the tour leaders with the help of the group

Day 15: Dinner will be an own expense meal at a local restaurant

Includes:

Full day Dhow excursion to Bazaruto Islands

Overnight:

Smugglers – for 2 nights in Vilankulos we stay in twin rooms with shared bathrooms.

Swimming pool, bar, restaurant, telephone.

Wifi not available



Distance/time:

530kms ± 6 hours (subject to road conditions), excludes stops for sightseeing & lunch

Optional Activities:

Snorkeling



Day 16 - 17 **INHAMBANE** [casitas Bx2 Lx2 Dx1]

Arab influences are strong in Inhambane dating back to when slaves, ivory, gold and spices were traded. Explore Inhambane and its 200-year-old cathedral, before moving to our casitas (reed cabin) under the palms next to the beach. Dhow rides and scuba diving on coral reefs are available (own expense).

Day 16: Breakfast provided by the tour leaders with the help of the group

Day 16: Lunch provided by the tour leaders with the help of the group

Day 16: Dinner provided by the tour leaders with the help of the group

Day 17: Breakfast provide by the tour leaders with the help of the group

Day 17: Lunch provided by the tour leaders with the help of the group

Day 17: Dinner will be an own expense meal at a local restaurant

Includes:

N/A

Overnight:

Palm Grove Resort – for 2 nights in Inhambane (Praia do Tofo / Barra) we stay in reed and thatch casitas. These are basic twin rooms en suite. Bar, restaurant, telephone.

Wifi not available



Distance/time:

330kms, ± 4½ hours, excludes stops for sightseeing & lunch

Optional Activities:

Scuba diving, ocean safari & deep sea fishing



Day 18 **BILENE** [camping BL-]

We travel further south along the coast to the town of Bilene situated on the shores of the Uembje lagoon. The lagoon is 8km wide and 27km long with clear water and white, sandy beaches. We spend the afternoon exploring the lagoon with options of kayaking and snorkelling (own expense), and swimming in the shallow, calm waters.

Day 18: Breakfast provided by the tour leaders with the help of the group

Day 18: Lunch provided by the tour leaders with the help of the group

Day 18: Dinner own expense

- Includes:** N/A
Overnight: Campsite – good ablution facilities, hot showers, swimming pool, restaurant, bar & shop
Distance/time: 375kms, ± 5 hours (sometimes!)
Optional Activities: Kayaking, snorkelling, & other water sports



Day 19 - 20 **KRUGER NATIONAL PARK** [camping BLD]

We travel through the Transfrontier Limpopo Park into Kruger National Park - visit big game country! Exciting game drives to spot lions, giraffe and the mighty elephant. Relaxing in the tranquil bush we experience a land forgotten by time, a true African wilderness.

Day 19, 20: Breakfast provided by the tour leaders with the help of the group

Day 19, 20: Lunch provided by the tour leaders with the help of the group

Day 19, 20: Dinner provided by the tour leaders with the help of the group

- Includes:** Entrance fees to Kruger National Park, morning and afternoon game drives
Overnight: Campsite – good ablution facilities, hot showers, swimming pool, restaurant, bar & shop
Distance/time: 340kms, ± 6 hours excluding border formalities & lunch stop (a long day!)
Optional Activities: Night game drive in National Park game viewing vehicles



Day 21 - 22 MPUMALANGA – JOHANNESBURG – TOUR ENDS [chalets Bx2 Lx1 Dx1]

Departing Kruger, we tour the Panorama Route, visiting Bourkes Luck Potholes, God's Window and the Three Sisters. We return to Johannesburg in the afternoon of day 22, sun-tanned, laid-back and ready to rejoin life. Tour ends @18:00pm

Day 21: Breakfast provided by the tour leaders with the help of the group

Day 21: Lunch provided by the tour leaders with the help of the group

Day 21 Dinner provided by the tour leaders with the help of the group

Day 22: Breakfast provided by the tour leaders with the help of the group

Day 22: Lunch will be an own expense meal

Day 22: NA

Includes:

Early morning game drive

Overnight:

Graskop Mogodi Lodge – for 1 night we stay in twin share bedrooms ensuite, for a chance to tidy up before flying out on day 22. Swimming pool, bar, restaurant, telephone.



Wifi not available

Distance/time:

480kms, 6½ hours excluding stops for sightseeing, lunch & game drives

Please note: we do a free drop off at Johannesburg airport on day 22 at +/- 16:00pm so you can book your flight out for the last day of tour.



Please note: The distance and travel times quoted above are an estimate only, and subject to local road conditions – remember it's an adventure!

Special Interest: A walking safari in South Luangwa is an essential Zambian experience. Game scouts will lead us on an exhilarating walk in this big game wilderness

Sustainable Tourism: In the Luangwa Valley we stay at Wildlife Camp who donate 60% of their revenues to the Wildlife and Environmental Conservation

Society of Zambia. A local guide will lead us on a game walk and night drive. Your visit will support employment opportunities.

2016 PRICES AND DEPARTURE DATES:

Prices: (valid Jan 2016 – Dec 2016)

€ 2 250 pps + local payment of US\$ 400

Single supplement: € 235 pp (If you are travelling on your own, Sunway will "room" you with another same gender client. You do not pay extra when booking as a single person. If however you request a single, then you'll pay the single supplement and have a single tent and, on accommodated nights, a single room.)

2016 DEPARTURE DATES

<u>LL12</u>				<u>LM22</u> Trade Route			
DEPARTS		ENDS		DEPARTS		ENDS	
LIVINGSTONE		LILONGWE		LIVINGSTONE		JOHANNESBURG	
Saturday at		Wednesday at		Saturday at		Saturday at	
14:00 pm		14:00 pm		14:00 pm		16:00 pm	
BT	12-Mar-16	23-Mar-16	German	BT	12-Mar-16	02-Apr-16	German
BT	09-Apr-16	20-Apr-16		BT	09-Apr-16	30-Apr-16	
BT	07-May-16	18-May-16		BT	07-May-16	28-May-16	
BT	04-Jun-16	15-Jun-16		BT	04-Jun-16	25-Jun-16	
BTg	25-Jun-16	06-Jul-16	German	BTg	25-Jun-16	16-Jul-16	German
BT	02-Jul-16	13-Jul-16		BT	02-Jul-16	23-Jul-16	
BTg	16-Jul-16	27-Jul-16	German	BTg	16-Jul-16	06-Aug-16	German
BT	30-Jul-16	10-Aug-16		BT	30-Jul-16	20-Aug-16	
BT	13-Aug-16	24-Aug-16		BT	13-Aug-16	03-Sep-16	
BT	27-Aug-16	07-Sep-16		BT	27-Aug-16	17-Sep-16	
BT	10-Sep-16	21-Sep-16		BT	10-Sep-16	01-Oct-16	
BTg	24-Sep-16	05-Oct-16	German	BTg	24-Sep-16	15-Oct-16	German
BT	08-Oct-16	19-Oct-16		BT	08-Oct-16	29-Oct-16	
BTg	22-Oct-16	02-Nov-16	German	BTg	22-Oct-16	12-Nov-16	German
BT	05-Nov-16	16-Nov-16		BT	05-Nov-16	26-Nov-16	
BT	19-Nov-16	30-Nov-16		BT	19-Nov-16	10-Dec-16	
BT	03-Dec-16	14-Dec-16		BT	03-Dec-16	24-Dec-16	

* **Bold dates** are guaranteed departures, all other dates guaranteed from 4 clients.

* **German:** These tours have a German speaking translator/tour leader

* **BT:** The Zambia, Malawi & Mozambique Trade Route" can be combined after the "Botswana Wildside" safari to create a complete tour of Southern Africa.

LM22 Livingstone to Johannesburg

€ 2 250 pps + local payment of \$400

Single supplement: € 235 pp

LL12 Livingstone to Lilongwe

€ 1 780 pps + local payment of \$300

Single supplement: € 80 pp

DETAILED TOUR INFORMATION:

In a nutshell

- A diverse African adventure – discovery route.
- All inclusive trip with cultural experience, adventure and wildlife through Zambia, Malawi, Mozambique and South Africa!
- Vic Falls, Lower Zambezi canoeing, Lake Malawi, Benguerra Island, Kruger National Park – great diversity!

Scenic Travel

www.scenictravel.nl – kantoor@scenictravel.nl - +31-(0)6-31995266